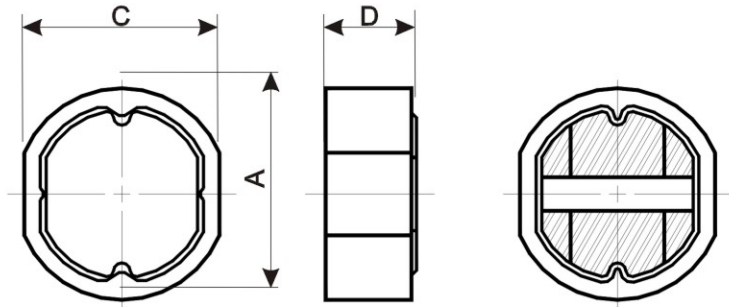
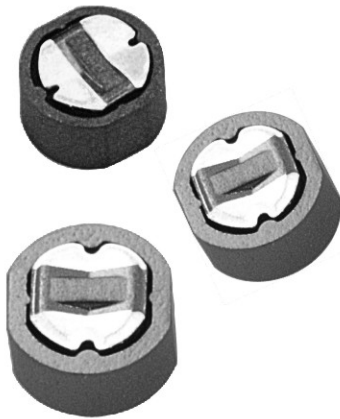


[CDRI TYPE]

面實裝 POWER CHOKE CORES 鍍銀型

Silver Plated Type



FEATURES 特長

提供耐大電流，低阻抗值，防止外部輻射干擾之閉磁型表面粘著之磁芯。

Surface mount power choke cores offer low DC resistance, magnetically shielded structure prevents interference from peripheral components.

PRODUCT IDENTIFICATION

產品識別碼

DL5 CDRI 7.8 × 4.5 RC → Silver plated 鍍銀

↓ Auxiliary symbol 輔助符號

↓ Height (D) 高度

↓ Outside diameter (A) 外徑

↓ Configuration symbol 形狀符號

↓ Available material 適用材質

USEAGE 用途

各種OA裝置
行動電話
數位裝置

Various kinds of OA equipment;
Cellular telephone;
Digital equipment.

DIMENSION 尺寸

Core Order Code	CORE			DIMENSION	
	A	C	D	CDR	CRI
CDRI 7.8x4.5 RC	7.8±0.15	7.3±0.15	3.85±0.15	5.8x4.5RC	7.8 X 7 X 3.7
CDRI 10 X 5.0 RC	10.0±0.15	9.6±0.15	5.0±0.15	7.8x5.0RC	10 X 8.5 X 4.25
CDRI 12.6x5.4 RC	12.6±0.15	11.6±0.15	4.6±0.15	10 X 5.4RC	12.6 X 10.7 X 5.4